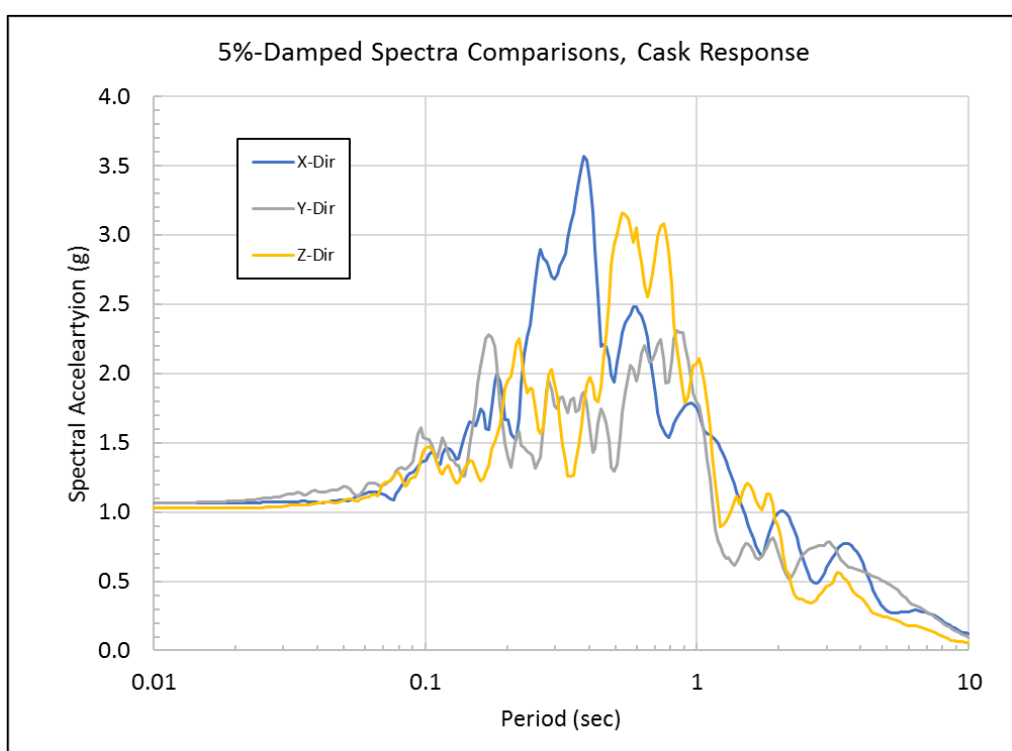
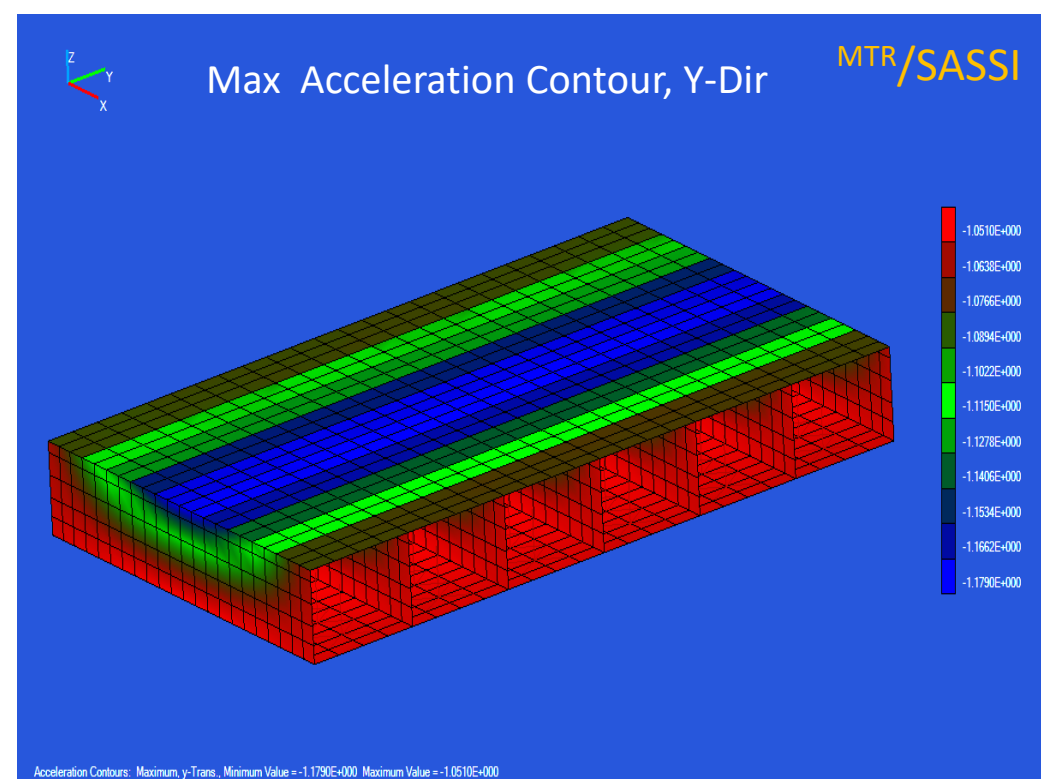
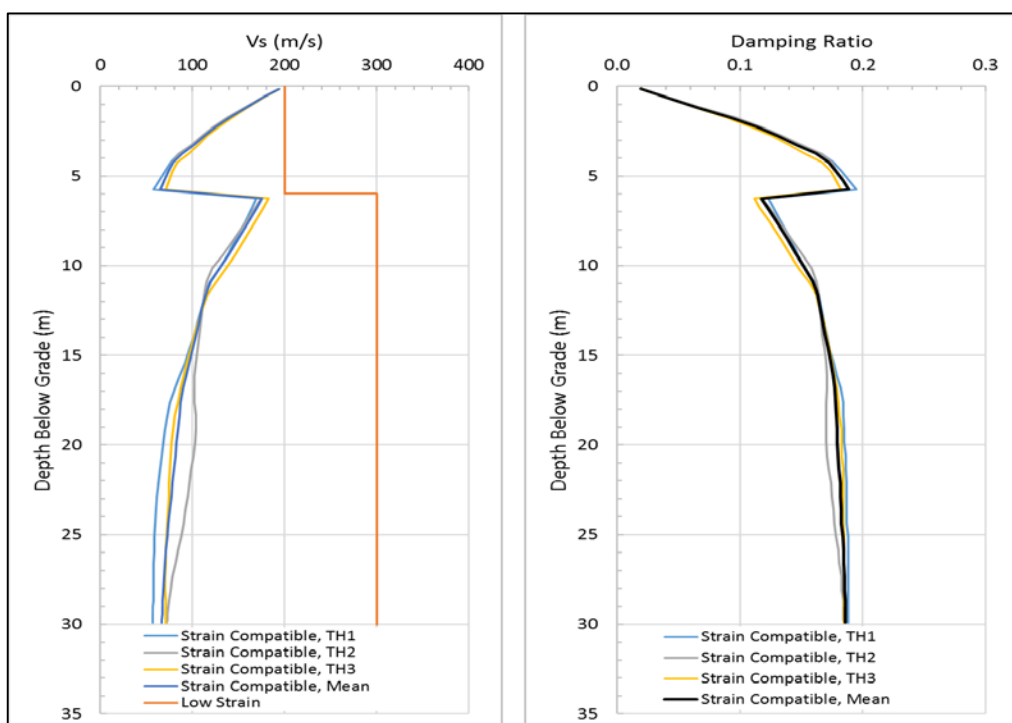
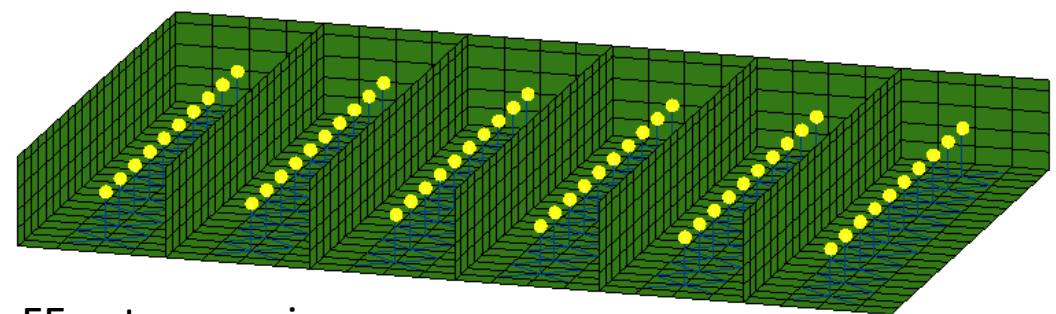
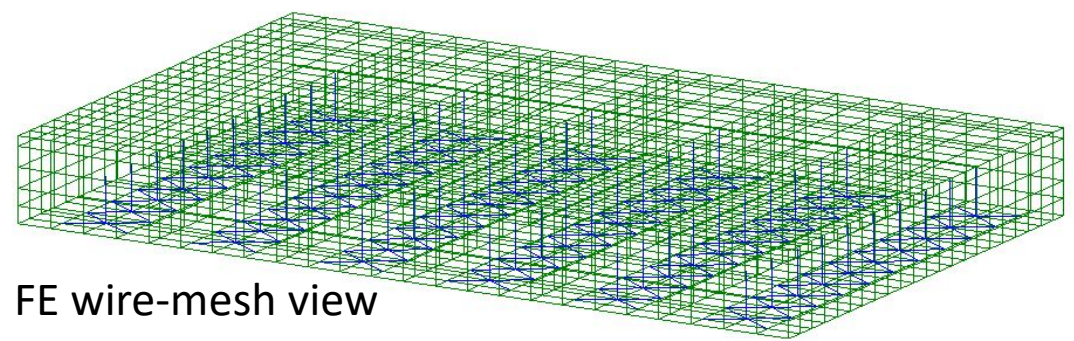


Seismic Protective Design of Low-Enriched Uranium Storage Facility



Discovery of a geological fault of unknown age in close proximity to an existing Low-Enriched Uranium storage facility prompted a site-specific Programmatic Risk Assessment (PRA) to establish confidence that appropriate seismic protection would be able to withstand a significant seismic event. MTR/SASSI was used to perform seismic SSI analysis of the proposed seismic protective structure to ensure compliance with international standards. Seismic responses in terms of the maximum accelerations, in-structure response spectra, and forces and moments in the structure were calculated and used for design.